

本公司产品连续开发中，有权在不进行通知的情况下修改本产品目录中涉及产品的规格与设计，ITIGER保留更改产品颜色和形状的权利，照片仅用于说明的目的。

**ITIGER** & **爱泰格** 均为我司的注册商标。管接件产品拥有多项专利，严禁模仿。我司保留追究、申诉权力。

\*本公司接头与PE管均为塑料制品，官方建议每隔18-24个月更换一次。

**中荷 - ITIGER®**

202510版

杭州富阳中荷电子有限公司  
FUYANG ZHONGHE ELECTRONIC CO.,LTD

浙江杭州市富阳区场口工业新区中荷路1号  
No.1 Zhonghe RD.,DongZi Changkou Industrial Zone, FuYang HangZhou China

联系方式 | International Department  
邮箱: itiger365@163.com | Mail: itigerfit@foxmail.com



www.itigerfit.com

始于1997年，**美国NSF认证**  
掌握百余项专利技术

Since 1997, NSF Certificated ,To Deliver Flawless Products To All Customers.

# 目录

# CONTENTS

<b>01</b>	<b>公司信息</b> COMPANY INFORMATION .....	<b>02-06</b>
<b>02</b>	<b>管接件技术说明</b> PUSH-IN CONNECTORS TECHNOLOGY DESCRIPTION .....	<b>07-10</b>
<b>03</b>	<b>管接件产品目录</b> FITTING SERIES .....	<b>11-26</b>
<b>04</b>	<b>PE管</b> PE TUBE .....	<b>27-28</b>
<b>05</b>	<b>附件</b> ACCESSORIES .....	<b>29-30</b>
<b>06</b>	<b>注释</b> NOTE .....	<b>30</b>

中荷公司成立于1997年，旗下ITIGER快速管接件的研发成功，填补了国内高品质管接件的市场空白，成为目前中国管接件产品首家通过美国NSF认证的品牌。公司秉承“精密制造——产品向零缺陷迈进”的宗旨，对设计、制造、装配和测试的整个流程进行严格管控，确保产品的最高品质。截至2019年，中荷公司掌握了百余项国内外专利技术。得益于产品质量的精益求精，中荷公司通过了权威部门的各种认证，成为美的、格力、海尔、小米、海信、安吉尔等国内外众多优秀企业的战略合作伙伴。



国内管接件产品**首家**通过美国**NSF**认证  
Till now the only One Get the NSF Certificate in China Mainland

全面通过**ISO9001**质量体系、精细化管理认证  
ISO9001 Quality System Certificates

通过欧盟**CE**、**RoHS**、**TUV**认证  
CE、RoHS Certificates

通过**国家卫计委**权威检测  
China CDC Testing Report

获得百余项**国家专利**  
Hundreds Patents



**中荷—ITIGER®**

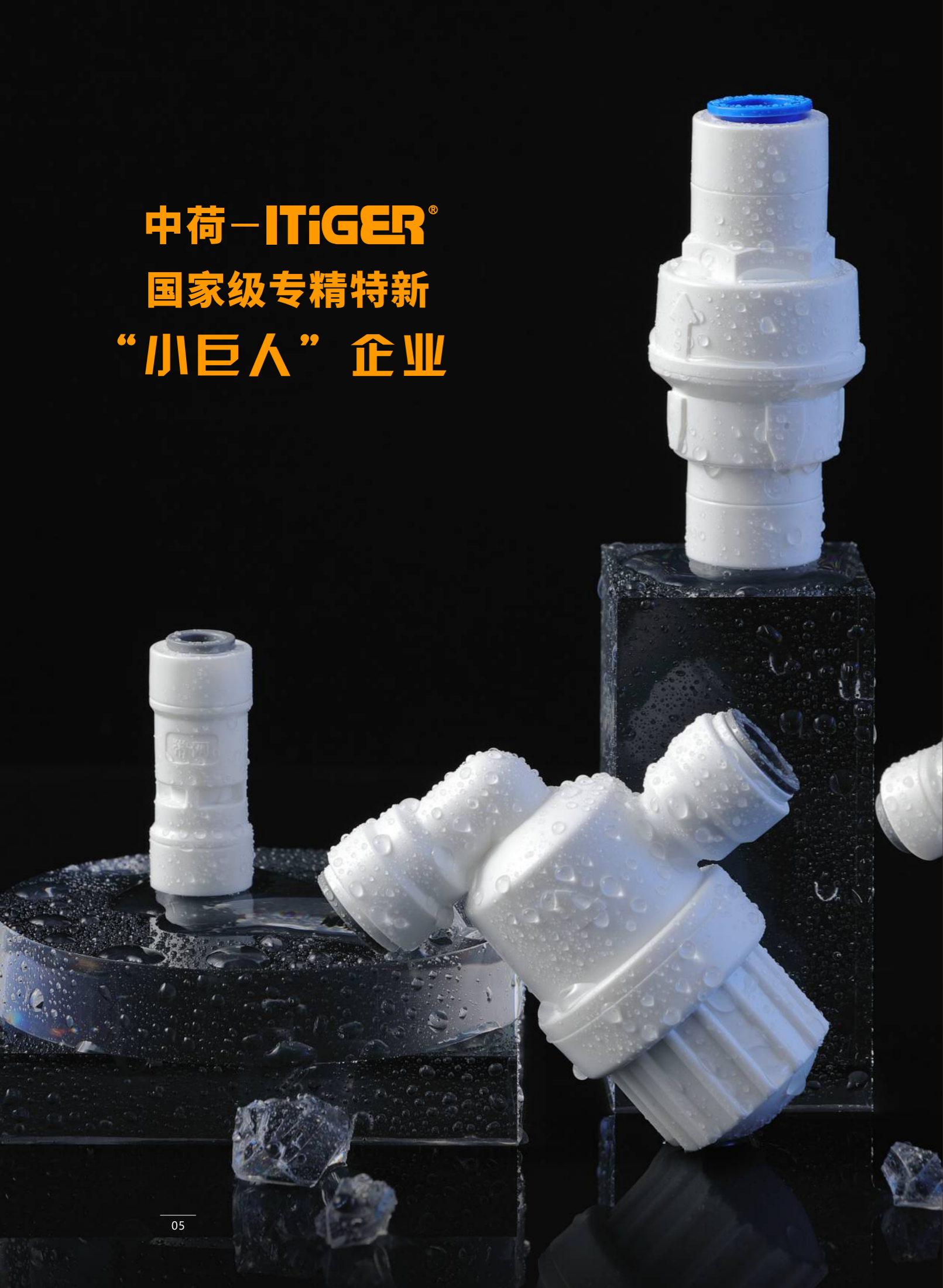
**深耕净水行业近30年**

**像修炼生命一样修炼产品质量**

**以自主创新谋求企业发展 以核心技术实现跨越升级**



**中荷—ITiGER®**  
**国家级专精特新**  
**“小巨人”企业**



10个净水品牌 9家选择ITiGER

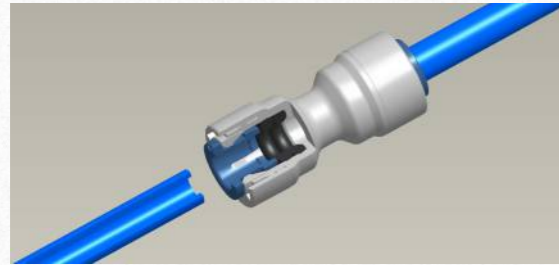
自1997年以来，中荷ITiGER与全球500多个净水品牌达成战略合作



以上为部分战略合作伙伴(排名不分先后)

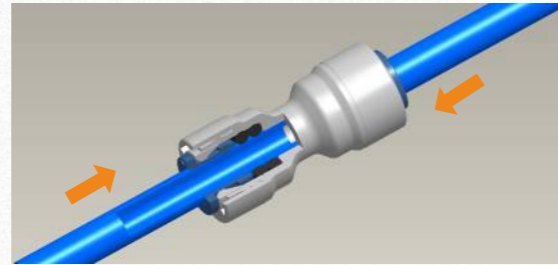
始于1997年，美国NSF认证，掌握百余项专利技术  
 Since 1997, NSF Certified, To Deliver Flawless Products To All Customers.

## 安装和拆卸 Installing Fittings



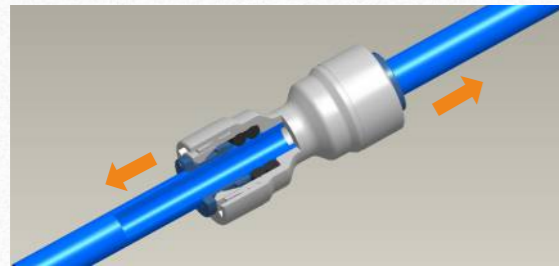
请务必使用干净的无任何异物或裂纹的PE管，垂直切割PE管，确保切口平整、无毛边和锐边。建议使用专用切管工具。

Cut the part of the tube to be inserted into the fitting to plane the end. Make sure to use a clean tube without any foreign material or cracks.

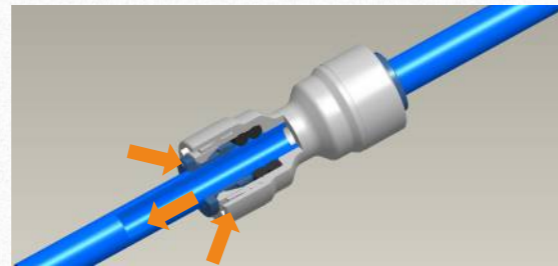


将PE管推入接头内，直到无法继续推动，确保PE管充分推入。推入PE管只需要适度的力量，推入过程中PE管或接头不应该被划伤或损坏，这有可能会产生渗漏。

When inserting the tube, remove any obstructions before full inserting the tube. Make sure the tube is full inserted. Inserting the tube into the fitting only takes moderate force. The tube or fitting should not be scratched or damaged in the process, as this is the main cause for water leak later on.



当PE管推入到位后，向外拉动PE管，以检查是否已固定牢，之后请再一次将PE管推入接头，以最后确认PE管安装牢固。  
To make sure the fitting is properly connected to the tube, pull it once, after pulling, push the tube into the fitting once more for a completter insertion.



拆卸前，请确认已关闭水源。拆卸PE管时，请按住卡爪（卡扣）的同时将PE管向外拔出，拆卸过程非常便捷。接头和PE管均可以重复使用。  
Make sure to completely eliminate pressure before disassembling the fitting. When disassembling the tube, push the clip in direction of the main assembly and then pull the tube out for easy disassembling. Fittings and tube can be reused.

## 锥度螺纹 Taper Thread



自主创新技术：螺纹合模线无缝对接  
Innovative Tech: No injection mold parting line of THREAD NPT

NPT: 国际标准锥度螺纹  
National (American) Pipe Thread

螺纹尺寸代号	牙数 n	螺距 p	牙型高度 h	基准平面内的基本直径			基准距离 L <sub>1</sub>		装配余量 L <sub>1</sub>		外螺纹小端面的基本小径
				大径 d=D	中径 d <sub>2</sub> =D <sub>2</sub>	小径 d <sub>1</sub> =D <sub>1</sub>					
1/8	27	0.941	0.752	10.242	9.489	8.737	4.36	4.102	3	2.822	8.481
1/4	18	1.411	1.129	13.616	12.487	11.358	4.10	5.785	3	4.233	10.996
3/8	18	1.411	1.129	17.055	15.926	14.797	4.32	6.096	3	4.233	14.417
1/2	14	1.814	1.451	21.224	19.772	18.321	4.48	8.128	3	5.443	17.813

注：塑料螺纹通常没有黄铜螺纹坚固。在拧紧螺纹接头时，请勿过度扭矩，因为这可能会导致破裂或渗漏等故障。  
When tightening threaded fittings, use care not to over-torque the fitting as this may damage the fitting and cause a leak or other failure.

## 条款和条件 Terms and Conditions

在使用ITIGER管接件产品调高系统压力之前，请仔细阅读、理解并遵守以下警告和注意事项。若不遵守而不当使用，可能会导致人身伤害或财产损失。  
Please read, understand, and follow all instructions, precautions, and warnings prior to using fittings on pressurized systems. Failure to follow all instructions precautions and warnings may result in bodily harm or property damage.

### 警告和注意事项

- 管接件推荐适用于液体，如水、食物、饮料等，若需用于其他化学物质请与我们的联系咨询。
- 不要随意拆卸或改装产品，因为这样可能导致产品故障、渗漏或失效。
- 不要对管接件过度旋转、弯折、扭曲、晃动、使用过度和用力过猛，这都会损坏管接件，并导致产品故障和漏水。
- 请勿在环境温度或流体温度可能超过45°C时使用该产品。请勿在工业气态中使用该产品。这可能会损坏管接件，导致故障、渗漏或失效。
- 请勿使用管道涂料或其它液体螺纹密封剂。仅使用生料带密封螺纹连接。
- 我们保留不定期修改产品的权利，实际产品有可能跟展示的图片不一致，请以实物为准。
- 在连接PE管之前，请先确认管尾有一个平整的切口，并且管子顶端30mm以内没有划痕。
- 当连接PE管时，须将PE管推入接头最里端直至不能推入为止，之后拉动PE管，以检查是否已牢固固定，如没有安装到位，则会引起渗漏。
- 当使用硬管连接，诸如电磁阀、韩式滤芯插栓时，请先去除管端毛刺，以避免潜在的切割或损坏管接件内部O型圈。
- 在拆卸管子时，应均匀用力地将卡爪（卡扣）往主体方向推进，然后拔出PE管。如果有加装小插片，请将其先卸下再拆卸管子。
- 拧紧螺纹接头时，请勿过度扭矩管接件，因为这可能会损坏管接件，并导致渗漏或其他故障。

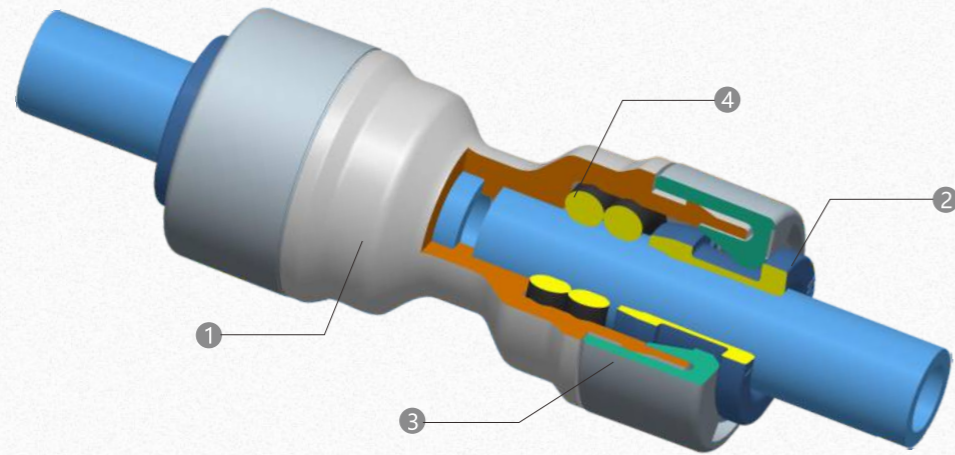
### WARNINGS & PRECAUTIONS

- Fittings are not recommended for use with liquids other than water and food or beverage products, where fittings may be used with other chemicals contact with us for advice.
- Do not disassemble or modify the individual product, as this may cause a product malfunction, leak or failure.
- Do not over-stress the fitting by rotation, twist, bending, shock, fatigue, or other excess force this may damage the fitting and cause malfunction, leak, or failure and voids.
- Do not use the product where ambient temperature or fluid temperature may exceed 45°C in domestic environment food & Drink, industrial pneumatic. this may damage the fitting and cause malfunction, leak or failure
- Do not use pipe dope or other liquid thread sealers. Use only teflon tape to seal threaded connections.
- We reserves the right to modify the product form time to time as required for quality improvement and per market requirement. actual product may differ from pictures shown.
- Before making any tube connection, verify that the end of the tube has been cut squarely and there are no scratches on the tube O.D within 30mm of the end.
- When making a tube connection, occasionally a gripping of the tube may occur just as the tube begins to pass through the O'ring, although the seal is not yet made. In this case, push the tube deeply once more to complete assembly of the connection. pull it once, after pulling, Failure to completely seat the tube into the fitting may cause a leak.
- When using metallic or stiff tubing (such as a solenoid valve, filter plug), de-burr the tube ends to avoid potential cutting or other damage to the O'ring.
- When disassembling tube connections, always press the collet evenly toward the body and then pull the tube. If a locking is used, remove the locking clip before attempting to separate a tube connection.
- When tightening threaded fittings, use care not to over-torque the fitting as this may damage the fitting and cause a leak or other failure.

## ITIGER® 管接件系列

精密制造 — 产品向零缺陷迈进!  
Precision Manufacturing To Become The Perfect Product!

PUSH-IN CONNECTORS



序号	部件名称	材料
①	主体	POM
②	卡爪	POM带不锈钢齿
③	卡帽	POM
④	双密封圈	丁腈橡胶

NO	Part name	Materials
①	Body	POM
②	Collet	POM with ST teeth (stainless steel)
③	Cap	POM
④	Double O'Ring	NBR

### 材料特性

POM: 具高机械强度和刚性, 抗疲劳性强, 耐反复冲击性强。

对多种有机物、无机化学品、洗涤剂有很强的抵抗力。

不推荐与强酸强碱或强氧化的物质接触使用。

食品级304不锈钢刀片: 采用高强度合金, 坚固耐用, 杜绝管子滑动。

丁腈橡胶: 食品级材料, 耐油性极好, 耐磨性较高, 耐热性较好, 粘接力强。

### MATERIAL CHARACTERISTICS

POM: Highly durable and resistant to fatigue and creep.

It has high resistance to a wide range of organic & inorganic chemicals and detergents.

Not recommended for use with strong acids or repeated exposure to strong oxidize.

STTeeth: 304 stainless steel, It has good corrosion resistance, heat resistance, low temperature strength and mechanical properties, and durable.

NBR: Good oil resistance, high wear resistance, good heat resistance, strong adhesion.

## ITIGER® 管接件系列

1	PE管配合标准	1/4"OD接标准1/4"PE管, 3/8"OD接标准3/8"PE管, 1/2"OD接标准1/2"PE管
2	本体	POM材质坚固耐用, 外形小巧美观
3	卡爪	自主核心技术生产, 更能有效抓住尺寸不稳定的管子
4	卡帽	专利技术, 免超声波焊接
5	密封圈	双密封圈专利技术, 双重保护
6	NPT标准管螺纹	NPT国际标准, ANSI/ASME B1.120, 螺纹合模线无缝对接专利技术
7	使用环境温度	4°C~40°C
8	环境储存温度	-20°C~65°C
9	PE管插入力	≤50N
10	PE管拔出力	≥80N
11	插拔次数	插拔20次, 接头卡爪无损坏
12	密封性能	管插到位后≥1.2MPa水压下5分钟无漏水现象
13	工作压力	≤0.4MPa
14	水温	5°C~38°C
15	交变应力密封性能	0MPa~1.05MPa, 10万次无泄漏、无变形、无损坏
16	爆破压力	≥2.8MPa, 无渗漏水现象、无结构损坏现象
17	卫生安全要求	符合《生活饮用水输配水设备及防护材料卫生安全评价规范》(2001)

## ITIGER® FITTING' STECHNOLOGYS

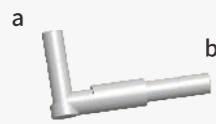
1	Tube Standard	1/4" Tube 3/8" Tube 1/2"Tube
2	Body	Smart and Simple Design, Space-saving
3	Collet with ST Teeth	304 stainless steel, good corrosion resistance, protection and lock tube
4	Cap	Special design, NO need use clip NO need ultrasonic welding
5	Double O' Ring	O2O Tech. of Double Ring, Double Protection.
6	NPT Thread	Innovative Tech:No injection mold parting line of NPT Thread
7	Fluid Temp	4°C~40°C
8	Ambient Temp	-20°C~65°C
9	Push Power	≤50N
10	Pull power	≥80N
11	Pull & Push Quantity	After 20times without apparent scratch
12	Sealing Ability	Qualified pressuring 5mins more than 1.2MPa water pressure
13	Working Pressure	≤0.4MPa
14	Water Temperature	5°C~38°C
15	Pressure cycling Test	Qualified after 100000 times test
16	Max. Pressure	≥2.8MPa
17	Hygiene Requirements	According requirements of the US FDA Standard.

## ITIGER® 管接件系列

精密制造 — 产品向零缺陷迈进!  
Precision Manufacturing To Become The Perfect Product!

PUSH-IN CONNECTORS

### 插杆 CONNECTOR



型号 PART NO.	插杆(a) STEM OD	插杆(b) STEM OD	备注
1800-A长	1/4"	1/4"	

### 插杆 CONNECTOR



型号 PART NO.	插杆(a) STEM OD	插杆(b) STEM OD	备注
1800-B短	1/4"	1/4"	
1800-C	3/8"	3/8"	
1800-D	1/2"	1/2"	

### 插杆 CONNECTOR



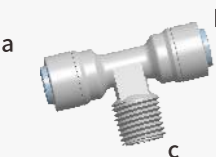
型号 PART NO.	插杆(a) STEM OD	插杆(b) STEM OD	备注
1800-F	1/4"	6.6mm	
1800-G	3/8"	9.9mm	

### 一字型插栓 CONNECTOR



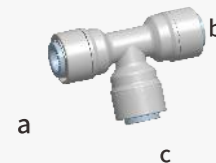
型号 PART NO.	管径(a) TUBE OD	插杆(b) STEM OD	备注
1801-A	1/4"	1/4"	
1801-B	3/8"	3/8"	
1801-C	1/4"	3/8"	
1801-D	3/8"	1/4"	

### 正T型外牙三通 MALE TEE SWIVEL



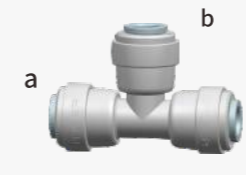
型号 PART NO.	管径(a) TUBE OD	管径(b) TUBE OD	螺纹(c) THREAD NPT	备注
1802-A	1/4"	1/4"	1/4"	
1802-B	3/8"	3/8"	3/8"	
1802-F	1/4"	3/8"	1/4"	

### T型三通 TEE UNION



型号 PART NO.	管径(a) TUBE OD	管径(b) TUBE OD	管径(c) TUBE OD	备注
1803-A	1/4"	1/4"	1/4"	
1803-B	3/8"	3/8"	3/8"	
1803-C	3/8"	3/8"	1/4"	
1803-D	1/4"	1/4"	3/8"	
1803-E	3/8"	1/4"	3/8"	
1803-F	1/2"	1/2"	1/2"	
1803-G	3/8"	1/4"	1/4"	
1803-H	1/2"	3/8"	1/2"	
1803-MD	1/4"	1/4"	1/4"	带网

### T型三通 TEE UNION



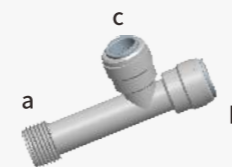
型号 PART NO.	管径(a) TUBE OD	管径(b) TUBE OD	管径(c) TUBE OD	备注
PP1803-A	1/4"	1/4"	1/4"	

### 侧T型外牙三通 MALE RUN SWIVEL



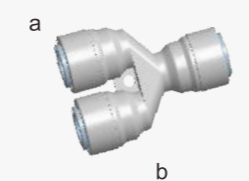
型号 PART NO.	螺纹(a) THREAD NPT	管径(b) TUBE OD	管径(c) TUBE OD	备注
1804-A	1/4"	1/4"	1/4"	
1804-C	3/8"	1/4"	3/8"	
1804-D	3/8"	3/8"	1/4"	

### 长款侧T型外牙三通 MALE RUN SWIVEL



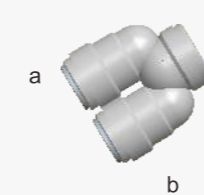
型号 PART NO.	螺纹(a) THREAD NPT	管径(b) TUBE OD	管径(c) TUBE OD	备注
1804-F	G1/2"	1/2"	1/2"	

### Y型三通 TWO WAY DIVIDER



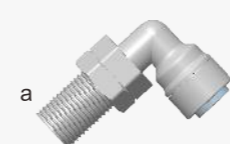
型号 PART NO.	管径(a) TUBE OD	管径(b) TUBE OD	管径(c) TUBE OD	备注
1805-A	1/4"	1/4"	1/4"	
1805-B	3/8"	3/8"	3/8"	
1805-D	1/4"	3/8"	3/8"	

### Y型三通 TWO WAY DIVIDER



型号 PART NO.	管径(a) TUBE OD	管径(b) TUBE OD	备注
1805-C	3/8"	3/8"	

### L型弯接 MALE ELBOW



型号 PART NO.	螺纹(a) THREAD NPT	管径(b) TUBE OD	备注
1806-A	M12.6	1/4"	

始于1997年, 美国NSF认证, 掌握百余项专利技术

Since 1997, NSF Certificated, To Deliver Flawless Products To All Customers.

始于1997年, 美国NSF认证, 掌握百余项专利技术

Since 1997, NSF Certificated, To Deliver Flawless Products To All Customers.

## ITIGER® 管接件系列

精密制造 — 产品向零缺陷迈进!  
Precision Manufacturing To Become The Perfect Product!

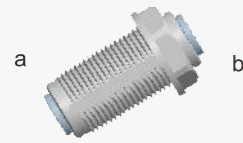
PUSH-IN CONNECTORS

### L型弯接 MALE ELBOW



型号 PART NO.	螺纹(a) THREAD NPT	管径(b) TUBE OD	备注
1806-B	5/16"	1/4"	

### 穿板直通 BVIKHEAD UNION



型号 PART NO.	管径(a) TUBE OD	管径(b) TUBE OD	备注
1807-A	1/4"	1/4"	
1807-B	3/8"	3/8"	
1807-C	1/4"	3/8"	
1807-F	1/2"	1/2"	

### 穿板直通 BVIKHEAD UNION



型号 PART NO.	管径(a) TUBE OD	管径(b) TUBE OD	备注
1807-A2	1/4"	1/4"	

### 穿板直通 BVIKHEAD UNION



型号 PART NO.	管径(a) TUBE OD	孔径(b) STEM OD	备注
1807-D	1/4"	11.4mm	
1807-E	3/8"	13.4mm	

### 穿板直通 BVIKHEAD UNION



型号 PART NO.	管径(a) TUBE OD	螺纹(b) THREAD NPT	备注
1807-I	1/4"	G1/2"	

### 四通



型号 PART NO.	管径(a) TUBE OD	管径(b) TUBE OD	管径(c) TUBE OD	管径(d) TUBE OD	备注
1808-A	1/4"	1/4"	1/4"	1/4"	

### 内牙直接 FEMALE ADAPTER



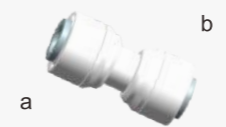
型号 PART NO.	管径(a) TUBE OD	螺纹(b) THREAD NPT	备注
1809-A	1/4"	1/4"	
1809-B	1/4"	M11	
1809-C	1/4"	1/2"	
1809-D	1/4"	G3/4	G为管螺纹
1809-E	3/8"	1/2"	
1809-F	3/8"	1/4"	
1809-G	3/8"	M11	
1809-H	1/4"	7/16"	
1809-I	3/8"	7/16"	
1809-J	3/8"	3/8"	
1809-K	1/2"	1/2"	
1809-M	1/2"	G3/4	G为管螺纹
1809-U	3/8"	G3/4	G为管螺纹

### 直通 UNION CONNECTOR



型号 PART NO.	管径(a) TUBE OD	管径(b) TUBE OD	备注
1810-A	1/4"	1/4"	
1810-B	3/8"	3/8"	
1810-C	3/8"	1/4"	
1810-D	1/4"	1/4"	带网
1810-E	3/8"	1/2"	
1810-F	1/2"	1/2"	
1810-G	1/2"	1/4"	
1810-H	5/16"	5/16"	
1810-L	5/16"	3/8"	

### 直通 UNION CONNECTOR



型号 PART NO.	管径(a) TUBE OD	管径(b) TUBE OD	备注
1810-A	1/4"	1/4"	单密封

### 直通 UNION CONNECTOR



型号 PART NO.	管径(a) TUBE OD	管径(b) TUBE OD	备注
FW1810-F	ø23.3mm	ø23.3mm	

### 一字型逆止阀 CHECK VALVE



型号 PART NO.	管径(a) TUBE OD	管径(b) TUBE OD	备注
1811-A	1/4"	1/4"	
1811-B	3/8"	3/8"	

始于1997年, 美国NSF认证, 掌握百余项专利技术

Since 1997, NSF Certificated, To Deliver Flawless Products To All Customers.

始于1997年, 美国NSF认证, 掌握百余项专利技术

Since 1997, NSF Certificated, To Deliver Flawless Products To All Customers.

## ITIGER® 管接件系列

精密制造 — 产品向零缺陷迈进!  
Precision Manufacturing To Become The Perfect Product!

PUSH-IN CONNECTORS

### L型双通逆止阀CHECK VALVE



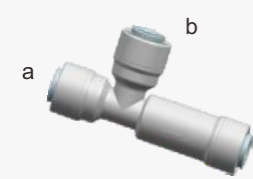
型号 PART NO.	管径(a) TUBE OD	管径(b) TUBE OD	备注
1812-A	1/4"	1/4"	

### L型双通逆止阀CHECK VALVE



型号 PART NO.	管径(a) TUBE OD	管径(b) TUBE OD	备注
PP1812-A	1/4"	1/4"	双阀芯

### T型三通逆止阀CHECK VALVE



型号 PART NO.	管径(a) TUBE OD	管径(b) TUBE OD	管径(c) TUBE OD	备注
三通单向阀	1/4"	1/4"	1/4"	

### 外牙直接MALE CONNECTOR



型号 PART NO.	管径(a) TUBE OD	螺纹(b) THREAD NPT	备注
1813-A	1/4"	1/4"	
1813-B	3/8"	3/8"	
1813-C	1/4"	3/8"	
1813-D	1/4"	1/2"	
1813-E	3/8"	1/2"	
1813-F	3/8"	1/4"	
1813-G	1/4"	1/8"	
1813-H	1/4"	1/4"	带O令
1813-K	1/2"	1/2"	
1813-M	3/8"	G3/4"	
1813-X	1/4"	1/8" BSP	

### L型插栓 ELBOW CONNECTOR



型号 PART NO.	管径(a) TUBE OD	插杆(b) STEM OD	备注
1814-A	1/4"	1/4"	
1814-B	3/8"	3/8"	
1814-C	1/4"	3/8"	
1814-D	3/8"	1/4"	
1814-F	1/2"	1/2"	
1814-H	5/16"	5/16"	
1814-I	5/16"	3/8"	
1814-K	1/4"	5/16"	

### L型插栓 ELBOW CONNECTOR



型号 PART NO.	管径(a) TUBE OD	插杆(b) STEM OD	备注
PP1814-A	1/4"	1/4"	

### L型插栓 ELBOW CONNECTOR



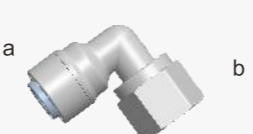
型号 PART NO.	管径(a) TUBE OD	插杆(b) STEM OD	备注
1814-E	1/4"	1/4"	

### L型插栓 ELBOW CONNECTOR



型号 PART NO.	管径(a) TUBE OD	插杆(b) STEM OD	备注
1814-G	1/4"	1/4"	

### L型内牙弯接 FEMALE ELBOW ADAPTER



型号 PART NO.	管径(a) TUBE OD	螺纹(c) THREAD NPT	备注
1815-A	1/4"	1/4"	
1815-B	3/8"	3/8"	
1815-C	1/4"	3/8"	
1815-E	3/8"	1/2"	

### L型逆止阀 MALE CHECK VALVE



型号 PART NO.	管径(a) TUBE OD	螺纹(b) THREAD NPT	备注
1816-A	1/4"	1/8"	

### L型外牙弯接 MALE CONNECTOR



型号 PART NO.	管径(a) TUBE OD	螺纹(b) THREAD NPT	备注
1817-A	1/4"	1/4"	
1817-B	3/8"	3/8"	
1817-C	1/4"	3/8"	
1817-D	3/8"	1/4"	
1817-E	1/4"	1/8"	
1817-F	1/2"	1/2"	
1817-G	3/8"	1/2"	

## ITIGER® 管接件系列

精密制造 — 产品向零缺陷迈进!  
Precision Manufacturing To Become The Perfect Product!

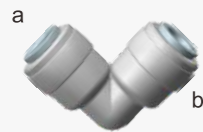
PUSH-IN CONNECTORS

### L型弯通 ELBOW CONNECTOR



型号 PART NO.	管径(a) TUBE OD	管径(b) TUBE OD	备注
1818-A	1/4"	1/4"	
1818-B	3/8"	3/8"	
1818-C	1/4"	3/8"	
1818-E	3/8"	1/2"	
1818-F	1/2"	1/2"	
1818-G	5/16"	5/16"	
1818-K	1/4"	5/16"	
1818-MD	1/4"	1/4"	带网

### L型弯通 ELBOW CONNECTOR



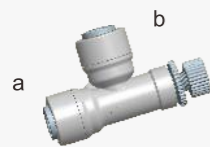
型号 PART NO.	管径(a) TUBE OD	管径(b) TUBE OD	备注
PP1818-A	1/4"	1/4"	
PP1818-C	1/4"	3/8"	

### L型弯通 ELBOW CONNECTOR



型号 PART NO.	管径(a) TUBE OD	管径(b) TUBE OD	备注
FW1818-G	3/8"	ø23.3mm	

### 流量调节阀 FLOW REGULATING VALVE



型号 PART NO.	管径(a) TUBE OD	管径(b) TUBE OD	备注
1819-A	1/4"	1/4"	

### 塑料芯流量调节阀 FLOW REGULATING VALVE



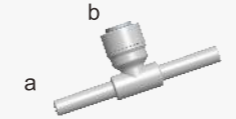
型号 PART NO.	管径(a) TUBE OD	管径(b) TUBE OD	备注
E1819-A	1/4"	1/4"	
E1819-B	3/8"	3/8"	

### 侧T型插栓 MALE TEE SWIVEL



型号 PART NO.	插杆(a) STEM OD	管径(b) TUBE OD	管径(c) TUBE OD	备注
1820-A	1/4"	1/4"	1/4"	
1820-B	3/8"	3/8"	3/8"	
1820-C	3/8"	1/4"	3/8"	
1820-E	3/8"	3/8"	1/4"	

### 正T型插栓 MALE TEE SWIVCL



型号 PART NO.	插杆(a) STEM OD	管径(b) TUBE OD	插杆(c) STEM OD	备注
1820-H	1/4"	1/4"	1/4"	

### 正T型插杆 MALE TEE SWIVCL



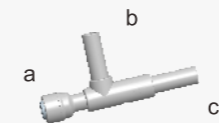
型号 PART NO.	插杆(a) STEM OD	管径(b) TUBE OD	管径(c) TUBE OD	备注
1820-D	1/2"	3/8"	1/2"	
1820-F	1/2"	1/2"	1/2"	
1820-G	1/4"	1/4"	1/4"	

### 正T型插杆 MALE TEE SWIVCL



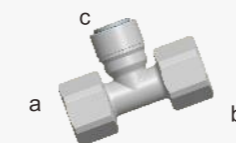
型号 PART NO.	插杆(a) STEM OD	管径(b) TUBE OD	管径(c) TUBE OD	备注
FW1820-D	3/8"	ø23.3	ø23.3	

### 侧T型插栓 MALE TEE SWIVEL



型号 PART NO.	管径(a) TUBE OD	插杆(b) STEM OD	插杆(c) STEM OD	备注
1820-K	1/4"	3/8"	3/8"	

### 正T型内牙三通 FEMALE BRANCH TEE



型号 PART NO.	螺纹(a) THREAD NPT	螺纹(b) THREAD NPT	管径(c) TUBE OD	备注
1821-E	1/2"	1/2"	3/8"	

### 压力桶球阀 TANK BALL VALVE



型号 PART NO.	管径(a) TUBE OD	螺纹(b) THREAD NPT	备注
1823-A	1/4"	1/4"	
1823-B	3/8"	1/4"	
1823-D1	3/8"	3/8"	
1823-E	1/4"	3/8"	
1823-D2	3/8"	3/8"	

始于1997年, 美国NSF认证, 掌握百余项专利技术

Since 1997, NSF Certificated, To Deliver Flawless Products To All Customers.

始于1997年, 美国NSF认证, 掌握百余项专利技术

Since 1997, NSF Certificated, To Deliver Flawless Products To All Customers.

## ITIGER® 管接件系列

精密制造 — 产品向零缺陷迈进!  
Precision Manufacturing To Become The Perfect Product!

PUSH-IN CONNECTORS

### 反冲球阀 HAND VALVE UNION CONNECTOR



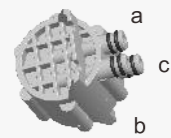
型号 PART NO.	管径(a) TUBE OD	管径(b) TUBE OD	备注
1825-A	1/4"	1/4"	
1825-B	3/8"	3/8"	

### 四面阀 FOUR WAYS SHUT OFF VALVE



型号 PART NO.	管径(a) TUBE OD	管径(b) TUBE OD	管径(c) TUBE OD	管径(d) TUBE OD	备注
1826-A	1/4"	1/4"	1/4"	1/4"	

### 三面阀 THREE WAYS SHUT OFF VALVE



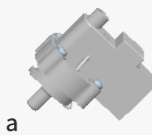
型号 PART NO.	孔径(a) STEM OD	孔径(b) STEM OD	孔径(c) STEM OD	备注
1826-C	11.4mm	11.4mm	11.4mm	

### 高压开关 HIGH PRESSURE SWITCH



型号 PART NO.	管径(a) TUBE OD	管径(b) TUBE OD	备注
1827-A	1/4"	1/4"	
1827-A1	1/4"	1/4"	

### 高压开关 HIGH PRESSURE SWITCH



型号 PART NO.	孔径(a) STEM OD	备注
1827-A2	10.8mm	

### 低压开关 LOW PRESSURE SWITCH



型号 PART NO.	管径(a) TUBE OD	备注
1828-A	1/4"	

### 浮球 FLOAT



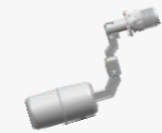
型号 PART NO.	管径(a) TUBE OD	备注
1829-A	1/4"	

### 浮球 FLOAT



型号 PART NO.	管径(a) TUBE OD	备注
1829-C	1/4"	

### 浮球 FLOAT



型号 PART NO.	螺纹(a) THREAD NPT	备注
1829-D	G1/2"	

### 减压阀 PRESSURE REDUCE VALVE



型号 PART NO.	管径(a) TUBE OD	管径(b) TUBE OD	备注
1830-A	1/4"	1/4"	
1830-B	3/8"	3/8"	

### 减压阀 PRESSURE REDUCE VALVE



型号 PART NO.	管径(a) TUBE OD	管径(b) TUBE OD	备注
1830-C	1/4"	1/4"	
1830-D	3/8"	3/8"	

### 减压阀 PRESSURE REDUCE VALVE



型号 PART NO.	管径(a) TUBE OD	管径(b) TUBE OD	备注
X1830-A	1/4"	1/4"	
X1830-B	3/8"	3/8"	
X1830-F	1/2"	1/2"	

### 废水比 FLOW LIMIT



型号 PART NO.	管径(a) TUBE OD	管径(b) TUBE OD	备注
1831-A	1/4"	1/4"	

可选流量: 150 / 300 / 420 / 500 / 600 / 800 / 900 / 1100 / 1200 / 1500 / 2000(CC)

### 角阀 VALVE ANGLE STOP



型号 PART NO.	管径(a) TUBE OD	螺纹(b) THREAD NPT	螺纹(c) THREAD NPT	备注
1832-A	1/4"	G1/2	G1/2	G为管螺纹
1832-B	3/8"	G1/2	G1/2	G为管螺纹

## ITIGER® 管接件系列

精密制造 — 产品向零缺陷迈进!  
Precision Manufacturing To Become The Perfect Product!

PUSH-IN CONNECTORS

### 多功能角阀 VALVE ANGLE STOP



型号 PART NO.	管径(a) TUBE OD	螺纹(b) THREAD NPT	螺纹(c) THREAD NPT	备注
1832-C	1/4"	G1/2	G1/2	带减压功能
1832-F	3/8"	G1/2	G1/2	带减压功能

### 金属角阀 VALVE ANGLE STOP



型号 PART NO.	管径(a) TUBE OD	螺纹(b) THREAD NPT	螺纹(c) THREAD NPT	备注
1832-D	1/4"	G1/2	G1/2	G为管螺纹
1832-E	3/8"	G1/2	G1/2	G为管螺纹

### 出水嘴 UNION CONNECTOR



型号 PART NO.	螺纹(a) THREAD NPT	备注
1833-A	G1/2	

### 快换阀



型号 PART NO.	备注
1834-A	

### U型逆止阀 CHECK VALVE



型号 PART NO.	孔径(a) STEM OD	孔径(b) STEM OD	备注
1835-A	11.4mm	11.4mm	
1835-B	12.4mm	12.4mm	

### U型逆止阀 CHECK VALVE



型号 PART NO.	孔径(a) STEM OD	孔径(b) STEM OD	备注
1835-A1	10.8mm	10.8mm	

### U型逆止阀 CHECK VALVE



型号 PART NO.	孔径(a) STEM OD	孔径(b) STEM OD	备注
1835-S	11.4mm	11.4mm	双阀芯

### U型减压阀 PRESSURE REDUCE VALVE



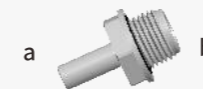
型号 PART NO.	孔径(a) STEM OD	孔径(b) STEM OD	备注
1835-F	10.2mm	10.2mm	

### 带网接头 UNION CONNECTOR



型号 PART NO.	管径(a) TUBE OD	备注
1836-A	1/4"	

### 外牙硬插 STEM ADAPTER



型号 PART NO.	插杆(a) STEM OD	螺纹(b) THREAD NPT	备注
1837-A	1/4"	3/8"	
1837-B	3/8"	1/2"	
1837-D	1/4"	G1/2"	
1837-E	1/2"	G1/2"	

### 直通



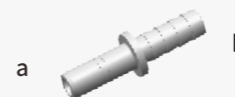
型号 PART NO.	管径(a) TUBE OD	备注
1839-A	1/4"	

### 一字型插栓



型号 PART NO.	插杆(a) STEM OD	插杆(b) STEM OD	备注
1840-A	1/2"	1/2"	

### 一字型插栓



型号 PART NO.	插杆(a) STEM OD	插杆(b) STEM OD	备注
1840-B	3/8"	9.9mm	
1840-C	1/4"	6.9mm	

### 限压阀 PRESSURE LIMITING VALVE



型号 PART NO.	管径(a) TUBE OD	管径(b) TUBE OD	备注
1841-A	1/4"	1/4"	

始于1997年, 美国NSF认证, 掌握百余项专利技术

Since 1997, NSF Certificated, To Deliver Flawless Products To All Customers.

始于1997年, 美国NSF认证, 掌握百余项专利技术

Since 1997, NSF Certificated, To Deliver Flawless Products To All Customers.

## ITIGER® 管接件系列

精密制造 — 产品向零缺陷迈进!  
Precision Manufacturing To Become The Perfect Product!

### 快接堵头



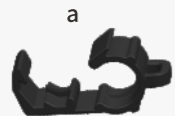
型号 PART NO.	管径(a) TUBE OD	备注
E1850-A	1/4"	
E1850-B	3/8"	

### 管夹



型号 PART NO.	管径(a) TUBE OD	备注
1853-A	1/4"	

### 管夹



型号 PART NO.	管径(a) TUBE OD	备注
1853-B	1/4"	

### 漏水保护器



型号 PART NO.	管径(a) TUBE OD	管径(b) TUBE OD	备注
1855-A	1/4"	1/4"	
1855-B	3/8"	3/8"	

### 漏水保护器



型号 PART NO.	管径(a) TUBE OD	管径(b) TUBE OD	备注
2分漏水保护器	1/4"	1/4"	
3分漏水保护器	3/8"	3/8"	

### 三通外加接头 (带O令)



型号 PART NO.	管径(a) TUBE OD	管径(b) TUBE OD	螺纹(c) THREAD NPT	备注
2802-B	3/8"	3/8"	3/8"	

### 外牙直通 (带O令) UNION CONNECTOR



型号 PART NO.	螺纹(a) THREAD NPT	螺纹(b) THREAD NPT	备注
2810-A	1/4"	1/4"	
2810-A(无O令)	1/4"	1/4"	
2810-B	3/8"	3/8"	

### 外牙直通 (带O令) UNION CONNECTOR



型号 PART NO.	螺纹(a) THREAD NPT	螺纹(b) THREAD NPT	备注
2810-C	G1/2"	G1/2"	

### 外牙直接 (带O令) MALE CONNECTOR



型号 PART NO.	管径(a) TUBE OD	螺纹(b) THREAD NPT	备注
2813-B	3/8"	3/8"	

### L型弯通



型号 PART NO.	管径(a) TUBE OD	备注
2814-A	1/4"	
2814-B	3/8"	

### L型外牙弯通 (带O令) MALE CONNECTOR



型号 PART NO.	管径(a) TUBE OD	螺纹(b) THREAD NPT	备注
2817-A	1/4"	1/4"	
2817-B	3/8"	3/8"	
2817-C	1/4"	3/8"	
2817-E	3/8"	1/4"	

### L型外牙弯通 (带O令) MALE CONNECTOR



型号 PART NO.	螺纹(a) THREAD NPT	备注
2817-D	3/8"	

### L型外牙弯通 (带O令)

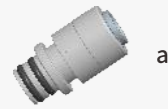


型号 PART NO.	管径(a) TUBE OD	备注
2818-A	1/4"	
2818-B	3/8"	

## ITIGER® 管接件系列

精密制造 — 产品向零缺陷迈进!  
Precision Manufacturing To Become The Perfect Product!

### 直通



型号 PART NO.	管径(a) TUBE OD	备注
2819-A	1/4 "	
2819-B	3/8 "	
2819-C	3/8 "	
2819-D	1/2 "	

### 前置过滤器



型号 PART NO.	管径(a) TUBE OD	管径(b) TUBE OD	备注
2分过滤器	1/4 "	1/4 "	
3分过滤器	3/8 "	3/8 "	

### 单胞胎



型号 PART NO.	管径(a) TUBE OD	插杆(b) STEM OD	备注
2分单胞胎	1/4 "	ø7.5	
3分单胞胎	3/8 "	ø9.5	

### 双水狭双胞胎



型号 PART NO.	备注
A1-2	

### 双水狭五胞胎



型号 PART NO.	备注
A1-5	

### U1双胞胎



型号 PART NO.	备注
U1-2	

始于1997年, 美国NSF认证, 掌握百余项专利技术

Since 1997, NSF Certificated, To Deliver Flawless Products To All Customers.

### 污水夹



型号 PART NO.	管径(a) TUBE OD	备注
WSJ-01	1/4 "	
WSJ-02	1/4 "	
WSJ-03	3/8 "	

### 螺纹单胞胎



型号 PART NO.	螺纹(a) THREAD NPT	插杆(b) STEM OD	备注
螺纹单胞胎	G1/2 "	ø12.7	

### 螺纹自锁接头



型号 PART NO.	管径(a) TUBE OD	管径(b) TUBE OD	备注
2分螺纹自锁接头	1/4 "	1/4 "	
3分螺纹自锁接头	1/4 "	3/8 "	

始于1997年, 美国NSF认证, 掌握百余项专利技术

Since 1997, NSF Certificated, To Deliver Flawless Products To All Customers.

## PE管



中荷PE管由高质量的线性低密度聚乙烯LLDPE制成，最大优点是优异的耐环境应力开裂性，比传统的低密度聚乙烯更加结实耐用。通常应用于水净化设备、净水器、制冰机等。适用于ITIGER快速管接件产品和其他厂商生产的净水器标准接头。

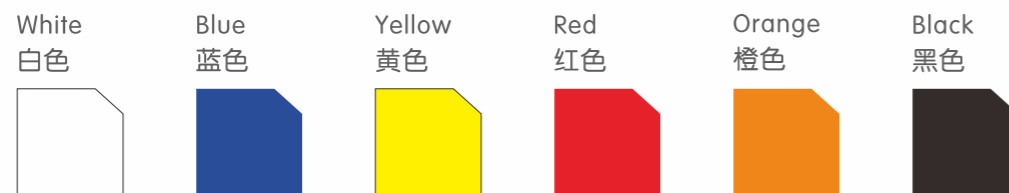
Our tubing is produced from an advanced grade of low density polyethylene. It's greatest advantage is superior environmental stress cracking resistance, greatly exceeding that of ordinary polyethylene tubing as measured. environmental stresses that can shorten the service life of tubing include chemical exposure, aging connections with barbtype fittings, or high vibration loads with connections to compression fittings. suitable for use with Itiger products and those of other manufacturers.

尺寸稳定性	Dimensional Stability
均匀性和长期强度	Uniformity And Long Term Strength
更高的爆破压力	Higher Burst Pressure
更大的拉伸强度	Greater Tensile Strength
广泛的可用颜色	Wide Range Of Available Colors

## 可供选择的尺寸 / Size Available

零件的编号 CODE NO	外径 OD	内径 ID	单盘长度 LENGTH	最小弯头半径 Minimum Elbow Radius
1/4"	0.25"	0.170"	300m	1.00"
3/8"	0.375"	0.250"	150m	1.25"
1/2"	0.5"	0.356"	80m	1.67"

## 可供选择的颜色 / Color Available



其他特殊颜色需定制  
详情请咨询工作人员  
Our tubing is available in  
multiple coding colors

## 工作压力和温度范围 Working Pressure & Temperature

Size尺寸	1/4 "	3/8 "	1/2 "
Parameter 参数			
Pressure 压力	230psi	170psi	170psi
Ture Tolerances管子公差	±0.05mm(±0.002 ")		
Temperature温度	Air 气体-20°C~65°C (150°) Liquidi液体		

压力值是基于PE管在常温中使用。 1bar=14.5psi(大约)  
当需持续在高温、高压中使用，请咨询我们的技术人员。  
Pressure values are based on PE tube used at room temperature.  
Consult our engineer when using at continuous elevated temperature and pressure.

## 暴露在紫外线下 / Exposure Under Ultraviolet

一般情况下PE管不得长时间暴露在紫外线下,如果不可避免请咨询我们的工作人  
Normally PE tube can't exposure under Ultraviolet for long time, if unavoidable, please consult our engineers.

## 耐化学腐蚀性 / Chemical Resistance

有关化学品或者腐蚀性液体中使用，请参考LLDPE的注意事项，并咨询我们的技术服务部门  
On chemicals or corrosive liquids, please refer LLDPE Notes and consult our engineers.

## 饮用水应用 / PE Tube Applicatio

Pe管适用于饮用型冷水，其中氯含量不得超过百万分之4 (4ppm)，高于70°F (20°C) 的热水或超过最大值的压力会明显降低PE管使用寿命，直接暴露在阳光下也会减少其使用寿命。请定期检查管道，如有损坏、硬化或者破裂迹象，应立即更换。

PE tube suit for cold water, chlorine content which may not exceed 4PPM, higher than 20°C hot water or exceeds the maximum pressure can significantly reduce the use life, exposed under sunshine will reduce use life. Check tube regularly, if there is damage, hardening or rupture, should be replaced immediately.

## PE管切割示意图 / Tube Cutter



请使用管切刀切割PE管，请确认管尾有一个平整的切口，管切刀刀片适合用于13mm以下的塑料管。  
Please use tube cutter cut the PE tube, verify that the end of the tube has been cut squarely, tube cutter with quality blade is suitable for cutting plastic tubings.

